



Commercial Blinds Spectrum FR



CI/SfB 1976 reference by SfB Agency

(76.7)

X

AFFINITY™
BLINDS FOR LIVING

Spectrum FR Fabric Performance Data

Fabric Colour	Solar			Optical			Colour Fastness	Fabric Weight g/m ²	Fabric Thickness mm
	T%	R%	A%	T%	R%	A%			
White	20	68	12	20	78	2	6	270-290	0.4-0.45
Cream	19	65	16	17	73	10	6	270-290	0.4-0.45
Beige	17	62	21	15	70	15	6	270-290	0.4-0.45
Blue	13	51	36	4	40	56	6	270-290	0.4-0.45
Sky	16	60	24	10	57	33	6	270-290	0.4-0.45
Denim	4	30	66	1	20	79	6	270-290	0.4-0.45
Toscana	1	19	80	0	11	89	6	270-290	0.4-0.45
Monarch	13	45	42	1	16	83	6	270-290	0.4-0.45
Sand	7	42	51	3	43	54	6	270-290	0.4-0.45
Pale Green	14	58	28	10	60	39	6	270-290	0.4-0.45
Magnolia	13	58	29	10	63	27	6	270-290	0.4-0.45
Black	0	4	96	0	5	95	6	270-290	0.4-0.45
Concrete	1	18	81	0	18	72	6	270-290	0.4-0.45
Iron	10	51	39	7	54	39	6	270-290	0.4-0.45
Glacier Blue	13	51	36	4	40	56	6	270-290	0.4-0.45
Racing Green	7	27	66	0	9	91	6	270-290	0.4-0.45
Dark Chocolate	0	6	94	0	6	94	6	270-290	0.4-0.45
Candy Pink	14	52	34	7	48	45	6	270-290	0.4-0.45
Dark Blue	0	5	95	0	6	94	6	270-290	0.4-0.45
Pistachio	10	46	44	3	40	57	6	270-290	0.4-0.45

T% - Transmitted R% - Reflected A% - Absorbed

Fire Regulations

This fabric meets with fire regulations specified by European standards. The fabric has either been woven with non-flammable fibre glass, Trevira CS or impregnated/coated with fire retardants. Details of the standards are given below;

BS 5867 Part 2 Type B (British)

In accordance with BS 5438: 1976 test method 2. Textile Fabrics & Fabric Assemblies subjected to a small igniting flame.

M1 Standard (French)

In accordance with NF P 92 - 503. The test is particularly hard on synthetic fabrics like fibreglass and polyester.

B1 Standard (German)

In accordance with Din 4102-B1. The test is particularly hard on natural fabrics.

Technical Performance

Architects and design engineers use the solar and optical properties of fabrics to assist in the design of temperature control systems within buildings.

The installation of window blinds can be more cost effective than installing an air conditioning system, to control the heat within a building.

The installation of suitable window blinds can reduce the glare within a building, which is particularly relevant where computers are used intensively. There are legal obligations stated in the health and safety regulations for areas with display screen equipment (i) (ii) require that 'windows shall be fitted with a suitable system of adjustable covering to attenuate the daylight that falls on the workstation.'

Colour Fastness

The colour fastness indicates the stability of the fabric's colour after subjection to natural light.

Measured against a scale of 1-8.

Where 1 is poor and 8 is good.

British Standard = 4

Technical Properties

The technical properties are given for each fabric colour including: Solar & Optical Transmission, Reflectance and Absorption.

Solar & Optical Transmission

The ratio of the amount of total solar or optical energy allowed to pass through a glazing system and blind to the amount of total solar or optical energy falling onto the glazing system.

Expressed as a percentage or decimal portion of a total unit of 1. For example, if half the total solar or optical energy transmits through a glazing system its solar or optical transmittance would be expressed as 50% or 0.50.

Solar & Optical Reflectance

The ratio of the amount of total solar or optical energy which is reflected outward by a glazing system to the amount of total solar or optical energy falling on the glazing system. Expressed as a percentage or decimal portion of a unit of 1.00.

Solar & Optical Absorption

The ratio of the amount of total solar or optical energy absorbed by a glazing system to the amount of total solar or optical energy falling on the glazing system. Expressed as a percentage or decimal portion of a total unit of 1.00.

Absorption = 1.00 - (transmittance + reflectance)

Foot notes:

(i) In response to the EU DIRECTIVE 90/270 passed in 1990, which deals with daylight regulation at the office environment. Foundation for legislation in European countries.

(ii) Department of Employment The health and safety (display screen equipment) regulations 1992. Statutory Instrument 1992 No 2792. London, HMSO, 1992.

APPROVED SUPPLIER:



Bubblegum



Lost Lake



Olive



Malt



Steel Drum



Beige



Mineral



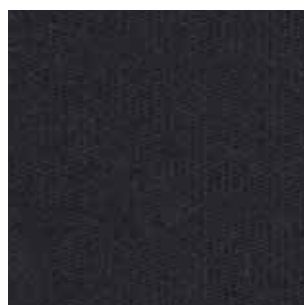
Willow



Red



Toasted Almond



Noir



Cream



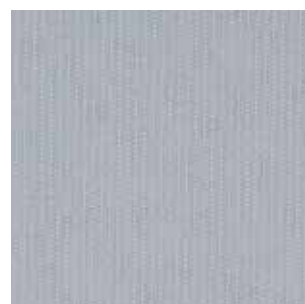
Ivy



Sky



Blue Babe



Mercury



Royal



White



Espresso



Plum



Spectrum FR

Colour Range	20
Louvre Widths Available	89mm (3.5") 127mm (5")
Roller Blind Width	2000mm
Fabric Composition	100% Polyester
Fabric Weights	270- 290g/m ²
Flammability Standards	BS 5867 Part 2 Type B (British)
Colour Fastness	6
Availability	On Stock
Fabric Samples	Available on Request



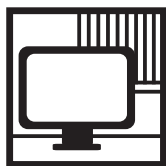
Features



FR Certification:
BS5867 Part 2
Type B



Suitable for
Moist Conditions



Suitable for
Computer
Environments



Available as
Roller & Vertical



Available as a
Panel Blind



Available as a
Shapella



Colour reproduced here may vary from the actual colours due to the limitations of the limitations of the printing process. Great care has been taken to ensure that the fabric swatches and the information supplied are correct, however specifiers and customers are advised to check the suitability of materials before use.

LARGER SAMPLES ARE AVAILABLE ON REQUEST